

Scouting Ireland campsites in Ireland

Website: www.scouts.ie

Viele Angaben fehlen – Stand: 14.10.11

Castle Saunderson

For further information: castlesaunderson@scouts.ie

(scheint derzeit nicht offen zu sein -)

Castle Saunderson

Currently being developed in partnership with Cavan County Council as a Centre for Peace and Reconciliation.

The Hostel is due to open in 2012 with Camping starting on the main camping fields due to commence in 2013

The development is being funded by a grant from the PEACE III EU fund administered by SEUPB

This 34 acre site when developed will have camping capacity for 1,000 persons. There will also be modern toilet and showering facilities. A Hostel with sleeping capacity for 50 persons, fully fitted catering kitchen facilities, toilets and showers is also being constructed along with a Wet Weather Facility incorporating an indoor climbing area and an area for archery.

Larch Hill

Website: www.larchhill.org

email: info@larchhill.org

Telephone: +353 1 4931410

Larch Hill is a National Campsite and Training Centre of Scouting Ireland.

The national office for Scouting Ireland is also located in Larch Hill.

Situated in the picturesque valley between Kilmashogue and Tibbradden Mountains in Dun Laoghaire Rathdown, and only 13 kms from the centre of Dublin City, the campsite has lots to offer to Beaver Scouts, Cub Scouts, Scouts, Venturers and Leaders alike. Larch Hill is also situated near the start of the Wicklow Way and is an ideal base for hiking.

Outdoor Details

The campsite consists of 88 acres (25 hectares) set out into 11 camping fields,

Each field has water points. There is a central Toilet and Shower Block. There is also a large Wet Weather Shelter. A small forestry on site allows for bivvying.

Indoor Details

The campsite has 2 hostels, which can be hired on a per group basis.

The Main House

This can accommodate 54 persons. Has full toilet, shower and kitchen facilities, a conference hall, and other meeting rooms.

Centenary Lodge

This timber frame chalet was opened in 2007. It can accommodate 26 persons and has full toilet, shower and kitchen facilities.

Activities

The campsite offers the following supervised activities, Climbing/Abseiling and Archery. Orienteering and Nature Trails are also available on site. Further details from

Indoor Accommodation



The Main House

The Main House is situated near the main reception area in Larch Hill. It sleeps up to 56 people and consists of a large catering kitchen and dining area, leaders' room, reading room, large conference hall, 4 person, 8 person and 12 person dormitories, male and female toilet and shower facilities and a large private garden area with flag pole. All beds have pillows and mattress covers. All you need to bring your sleeping bags. All kitchen utensils and equipment are provided. The kitchen consists of a large fridge and freezer, large gas cooker, two large ovens, toaster, microwave and more. The Main hostel is block booked and exclusively yours for the weekend.

- Catering is available upon request

Click [HERE](#) to view an interactive plan of the House or click [HERE](#) to download a floor plan.



The Centenary Lodge

The Centenary Lodge is situated in Larch Hills Training field to the rear of the main reception and carpark area. It opened in November 2007. It is a partly solar heated timber build chalet and sleeps up to 26 people. All bedrooms are dormitory style and the Lodge consists of four 4 person bedrooms and a large 10 person bedroom. All beds have pillows and mattress covers, All you need to bring is your own sleeping bags. A male, female, disabled toilet and showers alike are available in the lodge; it is also equipped with a modern kitchen which is attached to the main dining area. All kitchen utensils and equipment are provided. The kitchen consists of a large fridge and freezer, large gas cooker, oven, toaster, microwave and more. The Centenary Lodge is block booked and exclusively yours for the weekend.

Click [HERE](#) to view an interactive plan of the Centenary Lodge or click [HERE](#) to download a floor plan.

Other Buildings in Larch Hill

The Meitheal lodge is the heart of Larch Hills operations. In here you will find the main reception area for all your campsite enquires, this building also accommodates the voluntary Campsite staff that you will see and meet around the estate during weekends.

Scouting Ireland Headquarters is the Associations Administrative building. Here Scouting Irelands professional Staff works on a daily basis.

The Toilet and Shower Block is located near the main car park, the recently built shower block consists of male and female showers for scouts and separate showers for leaders. The toilets and showers are of the up most cleanliness and are cleaned regularly on a daily basis. The Toilet and Shower block is wheelchair accessible.

The Wet Weather Shelter is a 50ft by 40ft Barn like building located near the main reception and car park area. This building allows you to run a wet weather programme on those not so sunny days. The indoor Climbing wall is located in this building and archery takes place here on rainy days.

The Tuck Shop is located opposite the main reception area and offers refreshments, sweets and crisps. It opened every evening at 19.30

Alpha Lodge is located opposite the wet weather shelter, once a dormitory building; it is now home to the FAS scheme that operates in Larch Hill. These dedicated workers are responsible for the maintenance and upkeep of the estate.

About Larch Hill



Fáilte, Welcome, Bienvenu, Willkommen

Larch Hill is the National Campsite & Training Centre of Scouting Ireland.

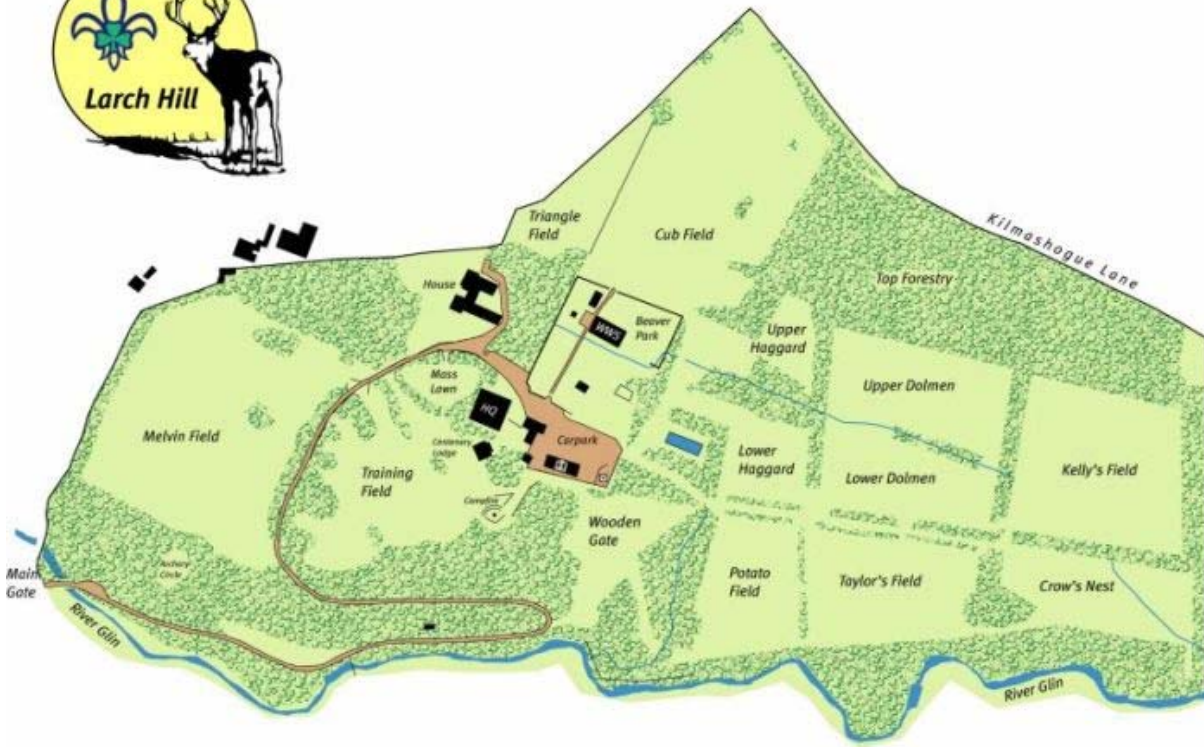
Situated in the picturesque valley between Kilmashogue and Tibbradden mountains 11 kilometers from the centre of Dublin, Larch Hill is a 36 hectare campsite surrounded by natural amenities to enhance your scouting experience.

The Campsite is within 7 kilometers of 3 major supermarkets and the public bus service runs nearby.

Larch Hill is a place where young people can enjoy outdoor pursuits and sport in a safe friendly and secure environment, and "assists young people in achieving their full spiritual, intellectual, physical, and cultural potential so as to take a constructive place in society as good citizens".

Larch Hill is filled with many natural amenities and wild life. Animals that can be found throughout the estate include deer, rabbits, squirrels, fox, badgers and much more. The estate is also home to many different rare and exotic species of trees, some of these are over 150 years old. As you travel around the estate you will see young trees that have been recently planted as part of Larch Hills policy on renewing trees on the estate. Maybe your group would consider buying some trees as your contribution to improving the environment.

The campsite also operates a reduce, re-use, recycle policy.



Mount Melleray

www.mtmellerayscouts.com

Contact Person
Administration Officer
Mount Melleray Scout Centre
Cappoquin
Co. Waterford
+353 58 54322

Outdoor Details

Plenty of camping ground is available around the centre, which is set in beautiful surroundings.

Indoor Details

We can accommodate up to 200 in comfort. Full board or self catering options are available.

Activities

A base in the heart of the Knockmealdown Mountains with excellent potential for adventure activities such as hill walking, mountain climbing, basket ball, orienteering, canoeing and many other Scout Activities. There are many features of historical, geological and scenic merit in the locality.

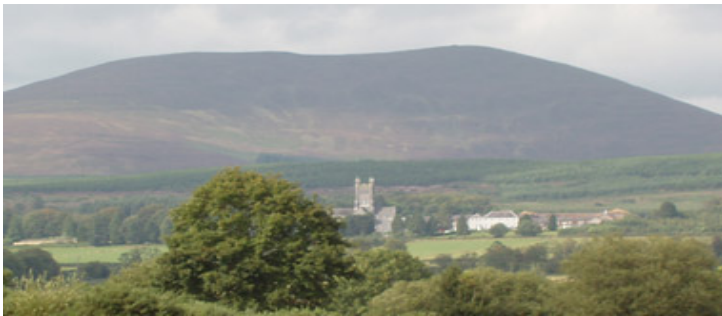
Mount Melleray Scout Activity and Sport Centre lies high in the Knockmealdown Mountains 7 km's outside the town of Cappoquin, County Waterford (in Scouting Ireland's [Waterford Scout County](#)). Originally a boarding school attached to the Abbey of Mount Melleray it was acquired by the Catholic Boy Scouts of Ireland in 1979 and opened as a Scout Centre.



The front of the Scout Centre

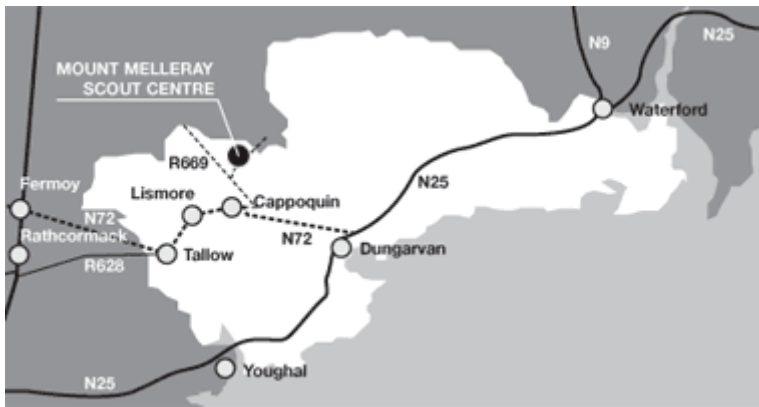
Since then the Scout Centre has been continuously improved and now offers you the opportunity to run a very active and varied programme for "Scouts" of every age. With hills and mountains at our back door and a glen with river and forest nearby, it is an ideal Scouting location. It is an exciting activity base for all, from the smallest Beaver to the most experienced Venturer.

So why not bring your group to Mount Melleray Scout Activity and Sport Centre so that they may avail of the wide range of facilities and activities that we have on offer and what will be a very enjoyable and memorable stay, both for them and you.



The Abbey of Mount Melleray Monastery

Getting to Mount Melleray



The route to Mount Melleray as outlined below
(click on the map for a larger version or on the link top left for a PDF of the map and directions).

From North /Dublin and East

Follow the N9/N25 to Waterford. At Waterford take the N25 west to Dungarvan. About 2km outside Dungarvan take right fork signposted N72 for Lismore and Killarney. This road runs through Cappoquin where you there will be a right turn signposted for the R669 to Mount Melleray.

From Cork

Follow the N8 towards Fermoy. Either take the right turn before Rathcormack onto the R628 which takes you through Aghern, Conna and Curraglass to Tallow, or in Fermoy take the N72 to Tallow. From Tallow follow the N72 to Lismore and on to Cappoquin. Go through Cappoquin and follow the R669 to Mount Melleray.

Mount Melleray Scout Activity and Sport Centre has the facilities for both indoor and outdoor accommodation and all meals are provided. The centre has indoor dormitory accommodation for 200 with separate leader accommodation as well as a fully serviced camping field.

Indoor Accommodation

The accommodation is divided into four separate areas; Tara (2 rooms with 20 beds in each and separate leader room), Eamonn Maca (4 rooms with 14 beds in each and separate leader room), Cashil (3 rooms with 14 beds and leaders room) and Deise (2 rooms with 14 beds and separate leader room).



One of the dorms in the main building

Camping

Mount Melleray has one camping field. A lighted walk way leads you to modern toilet and shower facility and a good supply of wood is available if you want to have wood fires. There is a wet weather shelter, which is available for campers, with water taps and washing facilities at the rear. In the years that the centre has been in existence, Scouts from all over the world have enjoyed the facilities the centre has to offer.



Campers busy preparing lunch

Meals

Week-end Stay: All Meals are provided; Supper Friday to Lunch on Sunday. Limited self-catering facilities are also available. If you would like packed lunches – which are available with 24 hours notice – for Saturday or Sunday please let us know and we will be happy to oblige.



The Dining Room at dinner time

[Home](#) | [About & Location](#) | [Accommodation & Camping](#) | [Activities & Facilities](#) | [Programmes](#) | [Tourist Attractions](#) | [Contact & Bookings](#)

©Copyright 2006
Mount Melleray
Scout Activity and Sport Centre

Lough Dan

Website: www.loughdan.com

E-mail: loughdansteve@gmail.com
Scouting Ireland
Lough Dan Campsite,
Lough,Dan,Roundwood,Co Wicklow.

Contact Details

Phone the on duty Warden at 01-2818137 or write to
Mr Stephen McGuinness
27 Beechwood,
Laragh,
Glendalough,
Bray,
Co. Wicklow

Outdoor Details

21 individual sites on 20 acres on the lake shore. Shower and toilet facilities on site in separate building near the main entrance. Tap water on site. Firewood provided on site (altar fires only a number of which are available on site)

Indoor Accommodation

The hostel in Lough Dan is currently undergoing refurbishment and is scheduled to re-open in May 2010.

Travel

Nearest Town - Roundwood(5 Km)

Nearest Bus - St Kevins Bus

Camp Fees

Contact Warden for more information.

Lough Dan Scout Centre is a Scout campsite and activity centre in the heart of the Wicklow mountains. Nestled between the Mountain Scarr and Lough Dan, the campsite has acres of flat, green and clean camping ground. With some of the site situated in an SAC (Special Area of Conservation) the site is truly in the middle of the country side.

Services onsite include a 54 bed hostel, with kitchen and showers. A toilet block with showers, toilets and hot water. Running water. Wet weather shelter. Campfire circle.

Please note this is a scout campsite. Only Scouts and Guides have permission to use the facilities. If youth groups / educational groups or schools wish to use or services please contact our bookings team to discuss

Hostel

The newly refurbished house sits atop of the campsite and overlooks the lake field.

A fantastic place to stay in the long summer months, sitting on the patio beside the bbq in the evenings with the smell of campfire smoke in the air. Magical in the winter with crisp unbroken snow if your lucky!

The hostel is split into upstairs and downstairs, each with a number of showers and toilets. Downstairs there are 2 common rooms – the fully equipped commercial kitchen and the common room.

The hostel can be shared or rented exclusively, see our bookings page for more info.

The hostel can be rented Sept – May during the week by groups with no links to scouting, again contact the bookings team for details.

Camping

Lough Dan is primarily a campsite and we pride ourselves on our flat, green and clean camping space.

With four separate camping fields, there is plenty of space for camping.

An onsite car park allows for a secure place to park your car / bus.

Water points along the campsite for easy access.

Toilet block equipped with showers and hot water.

A wet weather shelter for when the weather doesn't cooperate. Altar fire (barrels) for fires.

=====

National Water Activity Centre Killaloe

www.wateractivities.ie

Scouting Ireland

National Water Activity Centre

Killaloe

Co Clare.

Contact Person

Carl Dolan

2 St Munchins Drive,

Shannon Banks

Limerick

+353-87-2713324 (Mob)

Email: carldolan@killaloe.ie

Outdoor Details

Camping areas are available locally. (No camping facilities at the centre).

Indoor Details

The Chalet is a modern built centre on the lakeshore of Lough Derg. It sleeps 24 people in 2 dorms and 8 more in 2 leader rooms (bunk beds) and has a fully fitted kitchen.

Chalet: Sleeps 12 boys, 12 girls and 8 Leaders.

Activities

A full range of activities are available at the centre :

Sailing, canoeing, swimming, raft building.

All water activities are carried out under supervision.

Also available at the centre:

hiking, hill walking, orienteering, bivving and backwoodsmanship.

In nearby Killaloe there is a pitch and putt course and bike hire facilities are available locally.

Travel

Nearest Town - Killaloe (1 mile)

Nearest Bus - Killaloe

Nearest Railway Station - Limerick (18 miles)

Camp Fees

On request

FACILITIES AT NWAC



Written by An Laoch

Tuesday, 11 March 2008 09:17



Indoor Details

The Chalet is a modern built centre on the lakeshore of Lough Derg. It sleeps 24 people in 2 dorms and 8 more in 2 leader rooms (bunk beds) and has a fully fitted kitchen.

Chalet: Sleeps 12 boys, 12 girls and 8 Leaders.



Outdoor Details

Camping areas are available locally (Limited camping facilities at the centre).

Notes: Booking for Water Activities essential.

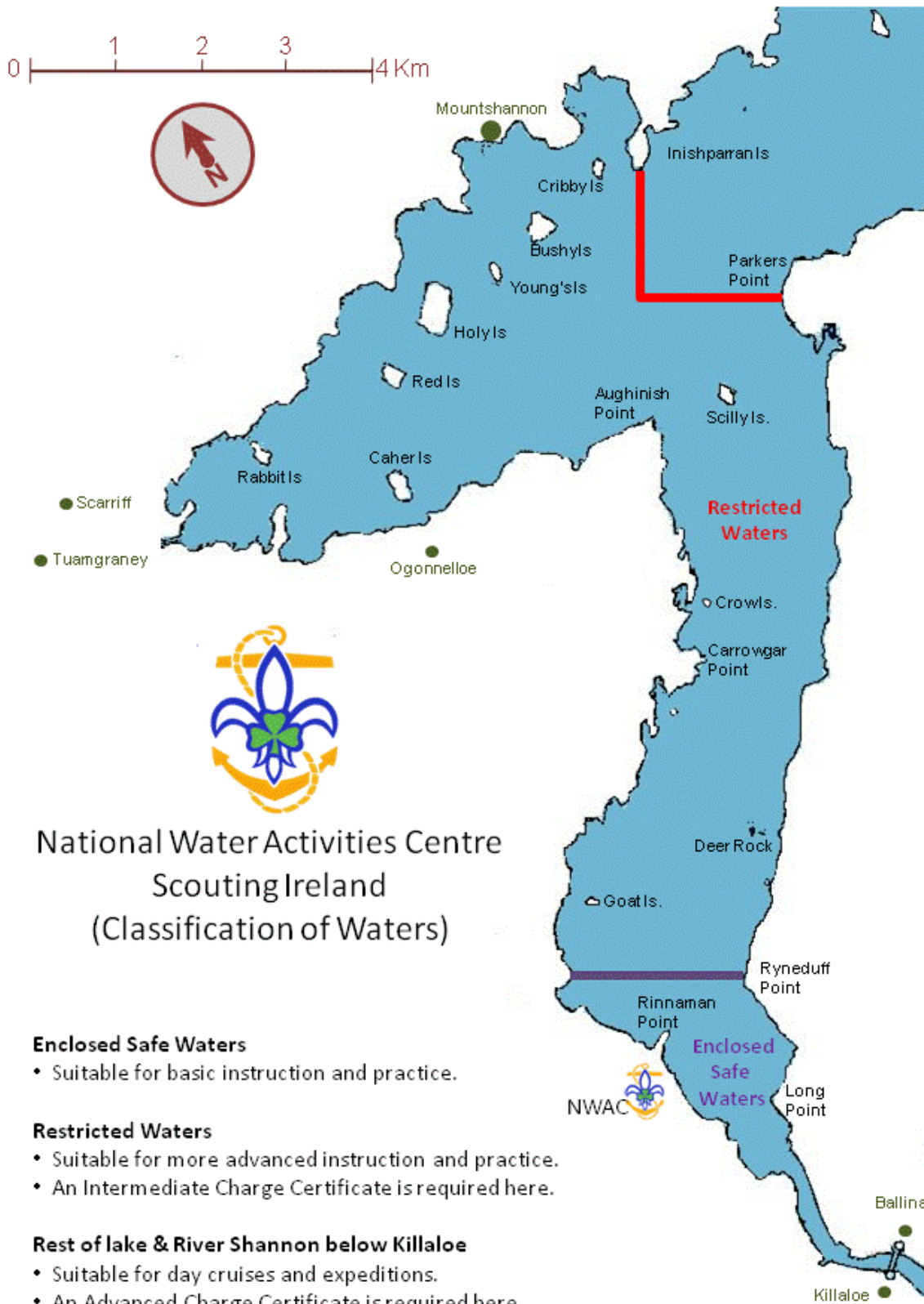
Beaver Scouts and Cub Scouts not allowed to participate in Sailing.

The National Water Activity Centre (NWAC) is situated 20 Km from Limerick City on the shores of Lough Derg which is just 3 Km from the village of Killaloe. The site is bounded on one side by an extensive forest with panoramic views of counties Clare and Tipperary. On the other side we have Lough Derg which is one of Ireland's most picturesque lakes leading up to the north to the villages of Mountshannon, Garrykennedy, Terryglass and Portumna.

The Centre is run by a trained group of volunteers and the training of staff is provided by the Irish Sailing Association.

The centre is the ideal location to explore water activities with your Section. The centre can provide canoeing, sailing, rafting and fun water based activities where your Section can explore the water with the comfort and security of trained staff. If you are experienced in water activities then the centre is an ideal base to explore the beauty of Lough Derg.

Killaloe is one of Ireland's most attractive villages with many places of historical interest as well as excellent outdoor sporting facilities. Killaloe was also the home of Brian Boru, High King of Ireland in 1102, when it was the Capital of Ireland.




National Water Activities Centre
Scouting Ireland
(Classification of Waters)

Enclosed Safe Waters

- Suitable for basic instruction and practice.

Restricted Waters

- Suitable for more advanced instruction and practice.
- An Intermediate Charge Certificate is required here.

Rest of lake & River Shannon below Killaloe

- Suitable for day cruises and expeditions.
- An Advanced Charge Certificate is required here.

Arklow Sea Scout Centre

Contact Person

Mr Jimmy Myler

Contact No. 0402-31565

Centre Detail

Arklow Sea Scout Centre
Arklow,
Co Wicklow

Contains a Large Scout Hall on 1/2 acre of secure enclosed Camping. With car parking, ideal for troop summer camps, pack holidays, Training courses.

- Hall is 60' x 40' will sleep on floor 50 to 60 Scouts
- Fitted Kitchen with Large gas cooker BERCO boiler, microwave etc.
- Male and Female toilets (newly refurbished)
- Lofts can also be used for sleeping
- Separate Shower block with 3 male, 3 female plus 1 shower and toilet for extension

Scouts.

- Large workshop / boat house can be used for running repairs
- 1/2 acre Campsite will camp over 100 (jamboree style) and its perfectly level
- enclosed by trees
- Parade Ground
- Campfire circle
- Water
- Large green area outside grounds ideal for footie, games, etc.

Local Amenities

- Situated alongside the Harbour
 - 2 minutes from lifeguard patrolled beach (summer)
 - 5 minutes from town center
 - 20 minutes from indoor pool and sports complex
 - 30 minutes from Coillte forest (ideal for bivvies)
 - Excellent beach hikes
-
- Large Sea Scout Hall on 1/2 acre of secure enclosed Camping. With car parking, ideal for troop summer camps, pack holidays, Training courses
 - Hall is 60 by 40 ft will sleep on floor 50 to 60 scouts
 - Fitted Kitchen with Large Gas cooker BERCO Boiler, microwave
 - Male and Female toilets (newly refurbished)
 - Loft can also be used for sleeping
 - Separate Shower block with 3 male 3 female plus 1 shower and toilet for extension scouts
 - Large Workshop / boat house can be used for running repairs
 - 1/2 acre Campsite will camp over 100 (jamboree style) and its perfectly level
 - enclosed by trees
 - parade ground
 - Campfire circle
 - Water
 - Large green area ideal for footie, games, etc

Where

Arklow, Co, Wicklow,

- Situated alongside the Harbour
- 2 minutes from Lifeguard patrolled beach (summer)
- 5 mins from town centre,
- 20 mins from indoor pool and sports complex
- 30 minutes from Coillte forest, (ideal for bivvie's)

- Excellent beach hikes
- 5 mins from chipper?

Ballyhornan

Ballyhornan Activity Centre

Contact : +44 7547 802828

Rock Road,

Ballyhornan,

Co. Down.

Centre Details

The Centre offers indoor accommodation and catering facilities. There is also a small area for camping. Further details, including, costs can be obtained from the above number.

Activities

The centre is ideally situated for nature study. There are a number of leisure centres nearby in case of bad weather. Pony trekking and horse riding are available locally.

Camp Fees

On Request.

Bog of Ring

commisfingal@gmail.com Managed by Fingal Scout County this camping field is being developed at present.

commisfingal@gmail.com

Managed by Fingal Scout County this camping field is being developed at present.

Outdoor Details: Ballyhornan Activity is on the seashore and is most suitable for outdoor activities and walking, camp skills, historical visits and local places of interest.

Indoor Details: There are 4 chalets each sleeping up to 18 persons in each. Each chalet is self contained and has bunk beds, its own kitchen with cooking facilities and equipment and toilet / shower.

Activities: The centre is ideally situated for nature study. There are a number of leisure centres nearby in case of bad weather. Pony trekking and horse riding are available locally.

Bog of Ring (nichts gefunden)

commisfingal@gmail.com

This campsite, owned jointly by Scouting Ireland, The Irish Girl Guides and the Catholic Girl Guides, consists of a 10 acre camping field with sanitary facilities and water points.

Located in the picturesque Nore valley and surrounded by Coillte forestry there are plenty of opportunities for hiking and pioneering activities.

Brinny

Brinny, Innishannon, Co.Cork

www.brinnycampsite.com

Bookings/Enquiries: brinnycampsite@gmail.com

Located at the gateway to West Cork

This 1 acre Camping field with toilets and showers and indoor kitchen, offers an ideal base for exploring the beauty of West Cork..

Brinny Campsite is part of Scouting Ireland's network of campsites that are managed by members of Scouting Ireland. This campsite is mainly funded by camping fees and is also partly funded by Scouting Ireland through its Campsite Development Grants and by grants administered by Cork County VEC.

Today the site is managed by the 97th Cork Innishannon Scout Group and has been renovated in recent years by the Scouters and Venture Scouts of the 97th Cork. On arrival at the site, visiting groups will be met by members of this team.



Our Campsite contains a one-acre greenfield site, which is large enough to cater for a whole Scout Group or a number of patrols while still leaving room for on-site activities.

The newly refurbished toilets and shower are located in the Old School House.

Also indoors is a basic kitchen, fitted with stainless steel stands, oven and fridge. Full use of the kitchen is available to visiting Groups at no extra cost.

Carne Holiday Centre

carneholidaycentre@yahoo.ie

This centre which is owned by the St.Vincent de Paul Society, is managed in conjunction with Scouting Ireland Wexford Scout County.

There is indoor accommodation for up to 70 persons and a full catering kitchen is available.

A sunny south-east success story

<http://www.svp.ie/Contact-Us/South-East/News/Latest-News/Carne-Holiday---Training-Centre.aspx>

Situated on the beautiful coast line of the South east corner of Ireland, Carne Holiday & Training Centre offers you everything you need for a residential weekend or a camp. The centre is within 10 yards of the rugged but safe coast line Carne HTC offers you the most splendid of accommodation, facilities and natural amenities.

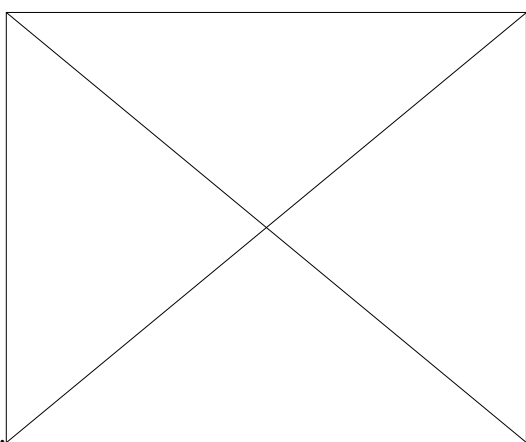
Carne is run under the auspices of St. Martha's SVDP conference and is currently run by voluntary staff. If you need an activity for your venturers or rangers, we welcome voluntary staff teams.

Carne HTC can offer indoor accommodation for up to 63 people in the main house with adjacent cottage accommodation for up to 12 people. Cottages are close enough to be used for leader and staff accommodation. Rooms are available for 1, 2 3 and 4 persons, all equipped with sinks and hot and cold water. They include an ensuite leader's room for 3 persons.

Camping is available on various sites around the house and will have access to toilets and showers. There is also a wet weather shelter available for use by campers.

We also offer a fully equipped modern self catering kitchen which conforms to all health standards along with 2 coffee docks off the training room. There is a large dining room which can accommodate up to 80 people along with a private staff dining room. Carne hosts a large training /conference room with three additional areas that can be used if needed.

Carne is situated 25 mins driving time from Wexford town and within 20 minutes of cinema and bowling. Group prices can be arranged on request. We are 10 mins driving from Rosslare Ferry port with easy access to Wales, UK & France. Available train stations are Wexford or Rosslare. Canoeing can be arranged on request and there are many coastal walks along with horse riding nearby and of course the wonderful sweeping beaches which have life guards at high season. Life guards can be sourced for off season



activities.

Accommodation rates are €10 per night p.p. with sheet hire of €2.00. There is a minimum weekend charge of €300.00.

For information contact Emily at 087 2222418 or Suzanne at 087 8336792.

Email address carneholidaycentre@yahoo.ie . Camping rates on request.

=====

Castleconnell (keine Webseite gefunden)

Contact Person:

Terence Shine

Woodpark,

Castleconnell,

Co Limerick

Phone: +353(0)87-2948507

+(0) 61-377904

terences59@gmail.com

mary_o_regan@hotmail.com

Outdoor Details

Castleconnell campsite is situated 7 miles from Limerick City. It has one large camping field of 3 acres and one small camp field of 0.5 acre. It can sleep up to 400 campers.

Toilet block with shower facilities, hot and cold water available.

Campsite open from March to October.

Indoor Details

Storage facilities also available.

Activities

The campsite is situated 10 minutes walk from the River Shannon.

There is plenty of scope for hiking, exploring, sightseeing, fishing, swimming, etc.

Firewood available on site.

Travel

Nearest Town - Limerick (7 miles)

Nearest Rail Station - Castleconnell (1km)

Nearest Bus - Castleconnell (1km)

Nearest Main Line Rail Station -Limerick(7miles)

Camp Fees

On request

Von Wikipedia:

Castleconnell (*Irish: Caisleán Uí Chonaill*) is a scenic [village](#) on the banks of the [River Shannon](#), some 11 km (6.8 mi) from [Limerick](#) city and within a few minutes walk of the boundaries with counties [Clare](#) and [Tipperary](#).

Many fine nineteenth-century buildings overlook the Shannon in Castleconnell. One of these, the former schoolhouse, is now home to the [Irish Harp Centre](#), run by noted harpist [Janet Harbison](#) and her husband. Another, the former convent, is now the Castleoaks House Hotel, which (because of its scenic location) is a popular venue for wedding receptions. A little south of the village lies the ruins of the once-grand [Mountshannon house](#), a [Palladian](#) mansion gutted by fire early in the 20th century.

The village centre has recently seen development activity including the building of new shop and business premises. There has also been much high density housing development in the area in recent times, due to its close proximity to [Limerick](#) city. These developments have come under some criticism from locals who claim that they are not in keeping with the character or development plans of the village.

Clara

<http://www.clarascouts.com/?p=4>

Bookings: clarascouts@gmail.com

+353 86 822762 or +353 86 3105417

Clara scout den offers indoor accommodation with full kitchen facilities and a camping field beside the den.

There are toilets and showers available for campers.

Campsite/Den for Hire



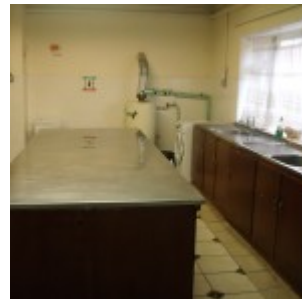
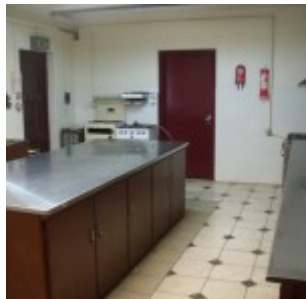
We have a fully equipped campsite available on the same grounds as our den. There are modern clean toilets available to the campsite, separate to the Den building itself. The camping field is large, it can easily accommodate....

Amenities available in the Campsite

- Altar fires
- large camping area

- outdoor toilets
- pioneering poles
- modern, clean toilets and shower

The Den can be hired separately and is ideal for Beaver troops. Clara is a perfect location to get to by train if you have easy access to the Dublin/Galway or Dublin/Westport lines.

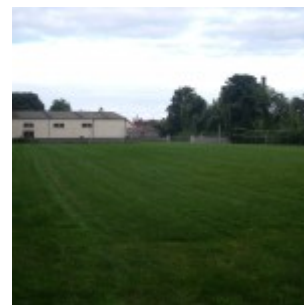


Kirwan Hall is one of the largest in the county. The Den is made up of a large hall with wood flooring, measuring x by x with gas heaters, with a large alcove at the base of the hall with an open fireplace and couches. There are male and female toilets and a separate disabled person's toilet, 2 offices and a large kitchen.

Kitchen facilities available:

- Large fridge with freezer
- Microwave
- Deep fat fryer
- Large gas oven (pictured above)
- full compliment of saucepans
- Burco kettle

Campsite for Hire



We've developed the Camping field this year to make sure it's suitable for Beavers right through to Rover groups. We're lucky enough to have a quiet, large location with established trees to the side and behind. This year we have added a new Volleyball court, as can be seen in the photographs, and we've added new goal posts and nets.

We have excellent clean, modern toilet and shower facilities at the back of the Den available to those camping in the camping field. [The Den](#) is also available for use.

Collon

Collon Scout Campsite lmccole@gmail.com

+353-86-8192846
St.Oliver's Scout Group Drogheda Campsite,
Whiteriver,
Branagans Cross,
Collon, Co. Louth.

Site Details:

Approx 1.2 Acres with access to use the grounds of the Cisterian Community which borders the Campsite (approx 300 acres of field, forests, lakes, paths, and gentle hills).Campsite is available all year round but obviously can be quite boggy if there has been a lot of rain

Facilities on site:

Toilets,
Log Cabin with kitchen and large room which can be used for sleeping.
Towers,
Campfire area.

Activites:

Aerial runway,
Orienteering
Local Area
3 km from Collon Village,
10 km from Drogheda.
Nearest Hospital
3 km from Collon Village,
10 km from Drogheda.

Nearest Hospital
Our Lady Of Lourdes, Drogheda

Nearest Bus
Collon on N2 Route,
Drogheda on M1/N1 Route

Nearest Train Station:
Drogheda

Nearest Airport:
Dublin

Activities Locally :

Swimming, Bowling, Paintball, Bru na Boinne Interpretative Centre at Newgrange, Millmount Museum, Mellifont Abbey (hiking distance).

<http://www.droghedascouts.org/index.php?sect=collon>

St Oliver's Scout Group is fortunate to have it's very own campsite within easy reach of Drogheda. This page will provide some information on our campsite, its beginnings and activities run there.



The provision of this campsite came about in 1983 through the foresight of the Leaders who recognised the lack of suitable campsites in the locality and our need to have a place where Scouts could camp safely and comfortably. Their active attempt to source a suitable campsite has resulted in an excellent facility. The generosity of the Cistercian Community in Collon has provided this invaluable resource and we are extremely thankful to them for this act of generosity.



The campsite is approximately 1 acre or 2.5 hectares. Over the years we have gradually modified and upgraded the campsite. Facilities comprise of 2-room cabin with electricity and running water, 20m wooden tower, seated campfire area, toilets, stores and a small car park.

The Group wishes to acknowledge all the effort and time from leaders past and present who have helped turn an ordinary field into a great resource for St. Oliver's Group. With such a campsite available so close by, it's understandable that the campsite gets a lot of use. From April to August the campsite is used by all section of St. Oliver's and demand for booking weekends is high!



All sections of St. Oliver's from Beavers to Ventures use the campsite for their activities and a lot of regional events such as Beaver Day, Regional Cub Weekend and Regional Scout Shield have taken place in Collon over the years.

The campsite is ideally sized to accommodate a single Scouting group of 32. The nearby woods provide a plentiful supply of firewood (with no need to cut live timber).

The Cistercian Community kindly allow scouts to use the surrounding farmland and woods for wide-games, etc but the Country Code must be strictly adhered to.



The campfire area has a large fire area (for a really big campfire!), plenty of seats and plenty of room for action songs and sketches. Many a campfire has been held here until late with plenty of songs and stories.

The cabin serves many purposes depending on the scouting groups requirements. It can be used as a quartermasters store for food and gear, training area, cooking and dining area for Leaders with younger sections or even for sleeping in if the weather is too cold or wet. The cabin gives the great advantage that campsite can be used all-year round, not just in the summer.

The Tower provides a focal point for the campsite. From the top, there is a great view of the campsite and surrounding area. Also it can be used for aerial runways.

Curraghchase

Website: www.curraghchase.com (die Website wird z.Z. gewartet)

Curraghchase Scout Centre

Curraghchase Forrest Park

Askeaton

Co Limerick

Contact Person

John Corcoran

Phone: +353-87-6920599

Outdoor Details

Curragh Chase Scout Centre is situated in the heart of Curragh Chase Forest Park. There is camping for 10 Patrols. Toilet and washing facilities on site.

Indoor Details

The House can accommodate 26 people. Kitchen facilities available, also hot and cold water.

Activities

Curragh Chase Scout Centre offer a wide range of activities, including several graded orienteering courses, pioneering, backwoods and mountain survival techniques.

It also offers plenty of opportunity for those interested in cycling and nearby facilities provide opportunity to go Swimming, Pitch & Putt, Go Carting or visiting local centres.

Travel

Nearest Town- Adare 10Km

Nearest Bus - Adare 10Km

Nearest Railway Station - Limerick 20Km

Dundrum

www.dundruminternationalscoutcampsite.org

Dundrum International Scout Centre

Dundrum

Co Tipperary

Contact Person: Charlie Sullivan

+353 87 6360387

Outdoor Details

Dundrum Scout Centre is situated 12Km west of Cashel. It has 2 acres for camping. It can accommodate up to 10/12 Patrol tents. Fire wood available on site also has its own campfire circle. The camping field has its own toilet block.

Indoor Details

Contains 2 large rooms, 2 leaders rooms with double bunks, separate toilet and washing facilities. Electricity installed.

Activities

The Campsite is situated in the middle of 2000 acres of woodlands with some 40 Km of forest paths & roads. An orienteering map is available on request. An ideal area for all Scouting activities. Dundrum village is only 1.5km from the site . Fishing, Golf, and many other activities nearby.

Travel

Nearest Towns- Cashel & Tipperary 12km

Nearest Railway Station - Thurles & Limerick Junction 22km

Nearest City - Limerick 48km.

Camp Fees

On Request

Dundrum International Scout Campsite is a local campsite of Scouting Ireland attached to Tipperary North Scout County. Scouting first used Dundrum in the 1986 through the kind permission of Coillte. With a firm hand, a watchful eye and energetic enthusiasm Charlie Sullivan and his merry band have created what is a world class facility.

Outdoor Details

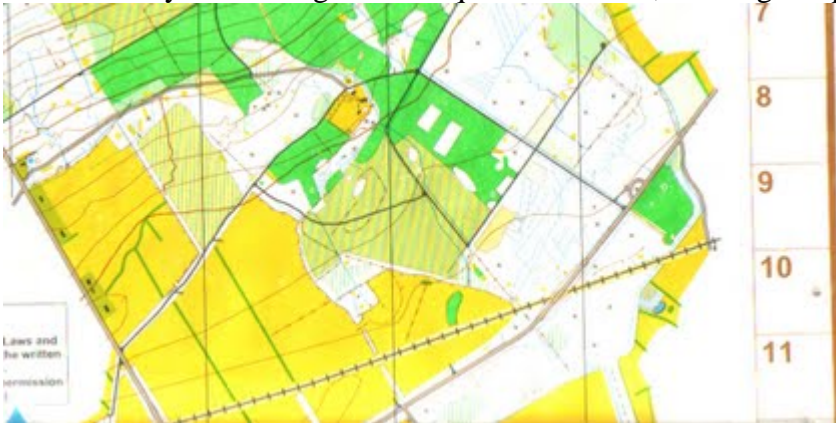
Dundrum campsite is situated 12 KM from Cashel. We have two acres for camping. Up to 10/12 patrol tents can be accommodated. Firewood is readily available onsite. The campsite is surrounded by 2000 acres of forestry/woodland with over 40KM of forest roads and paths. Dundrun village is 1.5KM from the campsite

Indoor Details Weston Chalet

There is one large building with 24 bunk beds in two separate rooms. There are two leaders rooms also. We have a large indoor shower/toilet room converted for wheelchair users, also two other showers with hot running water. There is a large kitchen with gas cooker and fresh running water, A large dining area is adjacent to the kitchen.

Outdoor flush toilets serve both the cottage and the campsite.

All electricity is on charge. This requires a €2 coin, so bring a supply.



Activities

Large area of woodlands for Scouting / Guiding activities, hiking, exploring.

Recycling

Dundrum Centre operates a recycling policy and a number of bins are provided to aid this initiative.

Subpages (1): [Programme Ideas](#)

Amenities

- **Flora:** The forest is coniferous – mainly Sitka and Norwegian spruce. Some groups of broadleaves, especially oak, have been retained with scattered ash and Western red deer. Other flora, old oak woodland vegetation.
- **Fauna:** The forest is home to a variety of bird and animal life including fox, fallow deer. Red squirrel, whiskered bats, pipistrelle bats and long eared bats.
- **Geology:** Surface water gley overlying sandstone.
- **Facilities:** Dundrum Boy Scouts have developed the old gamekeeper's lodge and field into a campsite for scouts. Car parks and picnic area.
- **Length of Trail:** There are extensive forest trails and an orienteering map is available at a small extra cost.

Activities

- **Fishing:** The river Suir passes through the village of Golden 12 KM from the campsite (contact 062 63106)
- **Golf:**
 - County Tipperary Golf and Country Club, 4 KM from campsite (contact 062

71116

- Tipperary Golf Club 12 KM (contact 062 51119)
- Cashel Driving Range & par 3 golf course (contact 06262111)
-
- **Horse Riding:** Crossogue Equestrian Centre is situated near the village of Ballycahill 16Km from campsite. Concessions are available for campsite residents on application. Prior booking required. Own insurance required. (contact 0504 54123)
- **Water activities:** These are available in Killaloe activity centre. prior booking is necessary. Check

<http://homepage.eircom.net/~csi/index.html>

Places of Historic Interest

- Rock of Cashel 12 Km 062 61437
- Cahir Castle 20KM 052 41011
- Swiss Cottage situated is just outside Cahir on Kilfinnane road approximately 23 KM from campsite.052 41144
- Mitchelstown Caves. The most spectacular cave network in Ireland.situated near the village of Burncourt just outside Cahir 052 67246
- Bolton Library in cashel 062 61944
- Holycross Abbey 12 Km. This is a restored 15th century Cistercian Abbey
- Lar na Páirce. Situated in the town of Thurles. This exhibition tells the history of the GAA from the beginning to the present day. Also visit Semple stadium 0504 22702

Subpages (1): [booking form](#)

Fota

Website: www.fotascoutcentre.org

Fota Scout Centre,
County Campsite,
Fota Island,Carrigtwohill,
Co Cork

Bookings: bookings@fotascoutcentre.org

Telephone:

+353 (0) 87 2749623 (after 7pm)

Outdoor Details

The are two camping areas that can accommodate four patrols each; one site has concrete fire-pads.

Indoor Details

Fota Cottage has five rooms, including three sleeping rooms (14 bunks), dining room and kitchen.Electricity and running water installed. It can accommodate 15 to 20 people (camp beds or air beds must be brought if the group is greater than 14).The kitchen has a gas hob and electric oven, sink, fridge and a hot water heater. There are ample plugs for the use of kettles, projectors etc.

Facilities for Campers

Three outdoor flush toilets serve both the cottage and site. A shower block with 4 shower units is also available.

On Site Activities

30 acres of woodlands for Scouting / Guiding activities, Equipment for Pioneering, Backwoods, and Orienteering is available on site for these activities.

Off Site Activities

There is plenty to see and do in the locality with Fota Wild Life Park, Cobh town, and Cork City easily accessible, for exploring. Either on foot or by train.

Travel - Nearest Town - Cobh

Nearest Railway Station -Fota

Trains every hour.

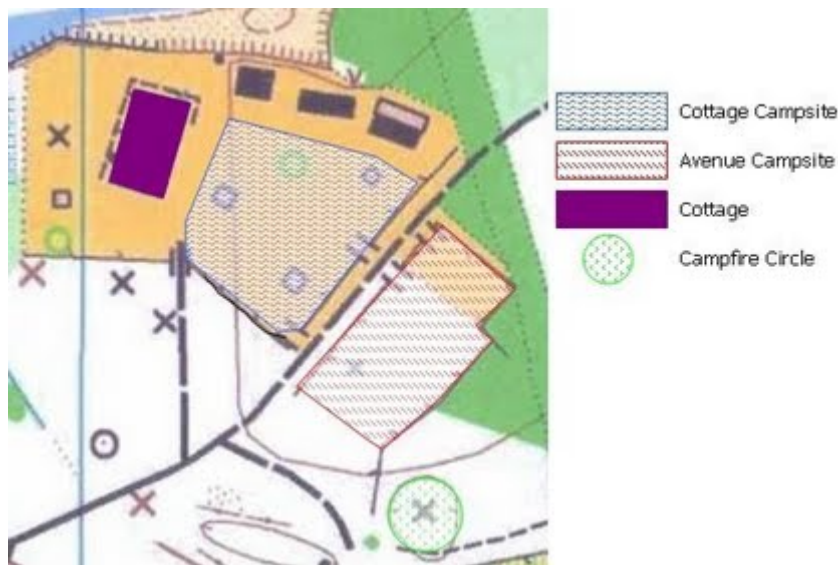
CampFees - See booking form.

Fota Scout Centre is a local campsite of Scouting Ireland's attached to Cois Laoi Corcaigh Scout County. Scouting first used Fota in the 1920's through the kind permission of the then estate owner Mrs Bell. In the 1970's University College Cork bought the estate and gave us the use of our cottage and campsites around the cottage. This arrangement was continued when the estate was taken over by the Fota Trust. Presently the estate is owned by The Irish Heritage Trust who lease the cottage and campsites to us.

Facilities

Fota Scout Centre is divided into three zones (two campsites and the cottage) for Groups using the Centre.

Depending on the size of the groups and requirements of the groups staying it's possible for up to three groups to use Fota at any one time.



The two sites (Cottage Campsite, Avenue Campsite) can accommodate up to four patrols each.

Indoor Details

Fota Cottage has five rooms, including three sleeping rooms (14 bunks and four campbeds), dining room and kitchen.

Electricity and running water installed.

The kitchen has a gas hob and electric oven, sink, fridge and a hot water heater.

There are ample sockets for the use of kettles, projectors etc.

Three outdoor flush toilets and a shower block housing 4 showers and wash basins serve both the cottage and the campsites.

Activities

Large area of woodlands for Scouting / Guiding activities, visits to the Wild Life Park, Cobh, Cork, hiking,

exploring. See [Programme Ideas](#) for more information.

Click [here](#) for a map of the centre and available woodlands.

Recycling

Fota Centre operates a recycling policy and a number of wheelie bins are provided to aid this initiative.

Glendale Lodge

<http://aughrimstreetscouts.ie/facilities.htm>

Contact Person: Ben McGarry

17 Glenbeigh Road, Co. Dublin

+353-(0)1-8388601

+353-(0)86-8150942

Indoor Details

Glendale lodge is a timber cabin situated in the Glencree Valley.

Accommodation consists of 24 beds in a 10-8-4-2 combination.

The cabin has a dining room/kitchen complete with a water boiler, four ring domestic cooker and refrigerator.

Toilet facilities include a flush toilet and two showers.

Cooking pots and utensils are provided but you need to bring cutlery, plates, mugs and sleeping bags.

Activities

The cabin is an ideal base for Venture Scouts/Rangers on hillwalking, cycling expeditions in the Wicklow Mountains or for P/L training courses in the traditional Scout/Guide skills. The adjacent woodlands provide an ideal setting for such programme activities as exploring, hillwalking, nature study games.

Travel

Nearest town - Enniskerry 6.4k

The

Cabin



Glendale Lodge aka "The Cabin"

Glendale Lodge is situated 6.4km from Enniskerry, the nearest big town and bus location. The nearest railway station is 15.0km distant, in Bray. Dublin Airport is 28km away to the north east.

"The Cabin" is available for hire by SCOUT & GUIDE GROUPS both from our fair isle, and from overseas. However, booking is very heavy, and it is advisable to book well in advance. Fees are EUR8.50 per person per night, with a minimum of EUR300 per weekend. Fees may be subject to change.

Booking Information is available [HERE](#).

Glendale Lodge is the name of the Group's Outdoor Activity Centre, based in the Glencree Valley, Co. Wicklow (Grid. Ref. O 171 164). Built from Rolls Royce packing cases (nothing but the best!), and Yorkshire Copper Pipe cases, "the Cabin" was officially opened on St. Patrick's Day, 17 March, 1965. The site was kindly made available, for a nominal rent, from Mr. John Thompson, a friend and benefactor of the Unit. Following rural electrification in 1968, two-phase electricity was laid on, and piped water was installed in 1984.

An opportunity arose in 1990 to purchase the land on which the Cabin was located. At IRP5,000 for just half an acre, it was indeed an expensive acquisition, but at least the purchase provided the Unit with security of tenure, which we had never had before. Subsequent to this purchase, the Cabin was totally refurbished and extended, and now consists of two dormitories, two small bedrooms, showers, flush toilet, and kitchen with water boiler, domestic cooker, fridge, and cooking utensils. Heating is from an open fire. **There is accommodation for 24 persons, in a 10-8-4-2 combination.** Mr Frank Nugent, former Venture Scout in the Unit, and member of the first successful Irish Everest Expedition, officially opened the extension in October 1995.

Over the years, Glendale Lodge has given us a permanent base for traditional Scout activities. Scouting skills have been taught to hundreds of Scouts. It is an ideal location for Venture Scouts, who use it as a base for hillwalking and cycling exhibitions in the Wicklow mountains, or for Patrol Leader training courses.

The woodland adjacent to the Cabin provides many recreational areas for games, outdoor activities, field studies, and nature study. There are miles of unspoilt walking country, with the famous Wicklow Way (long-distance walk) passing close by. Badgers, foxes, and red deer are regular visitors, and the site adjoins the largest and newest oak glen in the country.



The

Den Aughrim St. Scout Den

[Back](#)
[To](#)
[Top](#)

Our Den is situated in a residential area, at 42a Ben Edair Road, Oxmantown, Dublin 7, about 5km from O'Connell Bridge in the city centre. A rather plain exterior gives the visitor no clue what to expect on the inside (although occasionally you might see the odd Scout absailing, facing the ground, down the 18 foot front wall, much to the consternation of the neighbours, who long ago wrote us off as lunatics in uniform).

Inside is a different story. Here you will see evidence of Scouting in Action. The walls are adorned (defaced, our Den Chief might say) with Cub and Scout 'gadgets', ranging in quality and durability from "Our Hike to Larchill" reports written (in marker) on the back of cornflake boxes, to perfectly crafted knotting boards, made with great care, in order to gain that vital Merit Badge. There's also a fair smattering of photos, which we must run past the censor's eye some day, before we're all committed to the asylum. Still, of mad moments are magic memories made, they say.

The first "Den", used by the Unit in its early days was the premises of The Catholic Young Men's Society (CYMS) in nearby Aughrim Street. Tables had to be out on each occasion and Patrol gadgets had to be taken down from the walls after each meeting. With all its inconvenience though, it was here that the foundations of a solid Unit were begun.

The next move was the renting of a temporary Den at the rear of 2 North Circular Road, near the Phoenix Park Gates, at the exorbitant rent of ten shillings (50p) per week!

By the late 1940's, however, the Unit Council had decided to embark on the building of its own Den. With the enthusiastic support of Fr. Fergus O'Higgins, the Unit Chaplain, a site at Ben Edair Road was procured from the Dublin Artisans Dwelling Company, with a twenty-one year lease. Phil Doyle, a member of the Knight Errand Clan who was studying architecture at the time, designed the timber-framed building.

The Den, when finished, was 30ft. by 15ft. with walls of corrugated iron nailed to a wooden frame. The roof was asbestos and the floor was cemented. Heating was supplied from an iron boiler which could burn any type of fuel. Most of the fuel burned was turf and sticks which were provided by the boys themselves. The "old" Scout Den was finally opened in June 1951.

A triangular Clan (Leaders') Room extension was added in 1958 - the money being raised from Saturday night "Record Hops" with a 1s. (5p) entrance fee.

Leaders, at the time, held all their social events in the Den - Stag Parties, 21st. Birthdays etc. Everyone got the same birthday present - a Bergal framed rucksack! The soundbox for the pick-up (record player) was provided by a wireless radio. "Easi-Glide" or Lux Powder was scattered on the floor to make dancing easier. On many a Saturday night before the hop commenced many Clan members got tutored in the Fox-trot, Waltz or Quickstep. Membership Cards were required and the dance might be followed by a game of Solo or Pontoon.

By the late sixties it was increasingly in the minds of the Scout Leaders that in several years time the lease would be up on the site. Accordingly, the Finance Committee opened negotiations with the Artisans Dwelling Co. and in 1971 the Unit managed to secure the whole site. Work was soon started, and the foundations were poured on the 10th. May 1972.

When the walls reached a height of 17ft. a steel erector was employed to install the steel roof beams. Up to this time Scouting still continued in the old Den as the new walls were some distance from the old corrugated premises. However for a while, with the permission of the Parish Priest, Scouting continued in St. Gabriels National Schools, Cowper Street.

Now the slogging really started, pouring a concrete floor, laying drains, cutting and fitting timber roof joists and laying on roof slabs. The next major job was laying the asphalt roof which was sub-let to a

firm of experts. Central heating was installed, and the wiring and installation of lights was undertaken by a former member of the Unit. Then the maple floor was put down and the Cubs and Scouts moved back from St. Gabriels to continue Scouting once more from its Ben Edair Road Headquarters. The completion of the work of painting, carpentry etc. took over another year but at last it was time to plan the official opening. This took place on Sunday, 4th. April 1976 and was performed by Cearbhaile O Dalaigh, Uachtaran na hEireann.

A number of small alterations were made to the Den over the following years. The Grotto to Our Lady of Lourdes was added later in 1979. The Unit acquired its second Den in 1985 when the Venturer Den was opened - much of the work being done by the Venturers themselves, while the loftstore inside the Den was added later that year. The Back Store was added in 1987.

In the early 1990's the "new" Den began to show its age with signs of wear and tear becoming obvious. Some parts of the Den had become unsafe and some structural alterations were required. An Foras Aoiseanna Saothar (FAS), the state employment and training agency, came to the rescue with a six-month Community Youth Training Programme Scheme. The outside of the building was fully plastered and the front completely painted. Numerous alterations in the kitchen and toilets brought the health and safety aspects of the Den up to scratch while the painting of a magnificent mural of Scout activities brought the refurbishment to a fitting finale. The refurbished building was re-opened on the 19th December 1991 by Mr. Bertie Ahern, Minister for Finance.

Maintenance work on the Den never ends. Since the FAS refurbishment, all of the window frames have been replaced with maintenance free PVC frames and an alarm was installed. A new gate was installed as well as a wheelchair ramp was installed in 2005. The den interior and exterior was painted and the clan room fitted with a new trophy cabinet and a unit flag from the 50's mounted for Paddy's Day 2007. The Venture den has been refitted as a stores, while the old stores are now an office and a meeting room. None of the above works could have taken place without the generous support and assistance of the City of Dublin VEC's Youth Committee - Comhairle Le Leas Oige - to whom we are indebted.

Glenshelane

Glenshelane, Cappoquinn, Co. Waterford

www.glenshelanescoutcampsite.com (Website nicht verfügbar)

Contact Person: Fintan Strain

16 Sexton Street,
Abbeyside,
Dungarvan,
Co Waterford

Outdoor Details

Glenshelane Scout Campsite now has a cabin on site, along with showers and disabled toilet, electricity and running water.

Indoor Details

Beside the main camping area is a Large Timber Cabin. The Cabin has a Front Drying Area/Porch along with Indoor Toilet and Shower facilities. There is a Kitchen Area, with Cooker, Sink, Microwave, Fridge, Electric Kettle, Toaster and storage facilities. The Cabin of Glenshelane Scout Campsite & Cabin is available all year round. Activities

It is an ideal site for Scout/Guide activities, with gadget wood and pioneering timber available. There are mountains close by, good for hiking and hillwalking. There are altar fires on site and a campfire circle.

Travel

Nearest Town - Cappoquin

Nearest Railway Station - Waterford

Nearest Bus - Cappoquin

Camp Fee

On Request

Kilcully (keine Website gefunden)

KILCULLY

Scout Campsite

Contact Person

Michael Hayes

Kilcully Activity Centre

Kilcully,

Co Cork

+353-87-2729108

kilcullybookings@gmail.com

Kilcully campsite is situated 5km north of Cork City. It has two large camping fields in an area of 5ha. It can sleep up to 700 campers.

It has 2 toilet blocks and 1 showerblock.

Soccer Pitch

Wet Weather Facility .

Firewood is available on site

The campsite is open all year round.

Indoor Details

* The house is currently under renovation.

Kilcully House is a large Georgian house, with a separate dining room during the renovations, and assembly hall with indoor kitchen available.

There are 44 beds in five rooms.

Activities

The campsite has a basketball court, Abseiling tower and campfire circle. There is plenty of scope for hiking, exploring, sightseeing, touring etc.

Travel

Nearest town - Cork 5km.

Nearest Bus - Kilcully Cross 1km.

Nearest Railway Station - Cork 6km.

Nearest Airport - Cork Airport 10km.

Camp Fees

On request

Kinnitty (nichts gefunden)

Kinnity Scout Log Cabin

Kinnity

Co Offaly

Contact Person:

Jack Ryan

Emmet Street

Birr,

Co Offaly

Outdoor Details

There is a limited area for camping next to the cabin. Plenty of firewood available. River flows by the camping area.

Indoor Details

The Log Cabin is situated in the heart of the Slieve Bloom Mountains some 3 miles off the main road. The cabin can accommodate 20 persons in 2 dormitories and 2 Leader rooms.

There is also a kitchen/dining room with a fireplace for heat. A generator supplies power for the cabin. Toilets available.

Activities

The area provides some of the best activity area for putting your Scout/Guide skills into practice. It is ideal for pioneering, orienteering, hiking, biviving, nature study and tracking.

Travel

Nearest Town - Kinnity

Nearest Bus - Kinnity

Nearest Railway - Station - Birr

Camp Fees

On Request

1st Kilkenny Scout Den

<http://1stkk.wordpress.com/>

Contact Brendan Kelly

bkelly@kilkennycooling.com

+353 (0)87 2588983

The 1st Kilkenny Scout Group was founded in 1975. Since then they have passed on what Robert Baden Powell started over 100 years ago. His aim was to encourage the physical, Mental, Social and Spiritual development of young people.

Located near the centre of the historic Kilkenny City. The scout den offers indoor and outdoor facilities.

The den has 2 large meeting rooms, where groups can sleep on the floor. It also has excellent toilet and shower facilities and a full size catering kitchen. The grounds of the den can also be used for camping.

For further information and prices contact Brendan Kelly, Group Leader.

Lough Keel Scout Campsite

Web: www.loughkeelcamp.com

Centre Details:

Lough Keel Scout Campsite, Lough Key Forest Park, Boyle Co. Roscommon

Available for camping all year round.

Contact Person:

Donal Scully,

Camp Chief,

27 Summerhill,

Carrick on Shannon,

Co. Leitrim

Tel: +353-71-9620324

Mob: +353-86-0809217

Email: info@loughkeelcamp.com

Outdoor Details:

Lough Keel Scout Campsite situated 5 km from Boyle town

and 10 km from Carrick-on-Shannon just off the N4 Dublin - Sligo route.

It is a 4-acre site, which can accommodate up to 250 campers. The Services Block has ladies and gents toilets and individual private hot showers.

Our Campsite is open to all Scouts, Guides and Youth Groups, both National and International.

Activities:

The area has tremendous scope for Orienteering, Hiking, Fishing and Bivouacing.

Swimming can be done in Lough Key (lifeguards present during summer months)

or in nearby Carrick-on-Shannon Indoor Pool and Leisure Centre.

Pioneering wood is available on site and within the forest surrounding the campsite
firewood is plentiful.

Lough Key Forest Park

– Boda Borg , Tree Top Canopy Walk, Tunnels, Moylurg Tower.

New for 2011

-Zipit Forest Adventures – Hurtle down a 250m zip wire, ride a BMX bike across a tree-top bridge, swing into Cargo Nets, Climb Ladders and, for the fearless, you just have to try the base jump.....

Lough Gara Riding Stables

– Horse Riding, Clay Pigeon Shooting, Archery and Falconry.

Arigna Mining Experience

– A unique underground tour of an old Coal Mine.

Travel:

Nearest Town - Boyle 5km

Nearest Railway Station – Boyle (Dublin - Sligo Line)

Nearest Airport – Ireland West Airport Knock

Camp Fees:

€3.00 per person per night

Lough Keel Scout Campsite is situated 5 km from Boyle town and 10 km from Carrick-on-Shannon just off the N4 Dublin - Sligo route, adjacent to the renowned Lough Key Forest Park.

It is a 4-acre site, which can accommodate up to 250 campers. The Services Block has ladies and gents toilets and individual private hot showers. Lights and water taps are located the complete length of the camping area. A designated campfire circle is available.

Our Campsite is available all year round and is open to all Scouts, Guides and Youth Groups, both National and International.

Camp Fees are €3.00 per person per night.

Facilities



Kitchen area available for shared use, including Fridge, Freezer, Sink, Kettle, Toaster and Microwave.



Ladies and Gents Toilets



Wheelchair Access Toilet and Shower



Individual private hot showers, 2 Gents, 2 Ladies

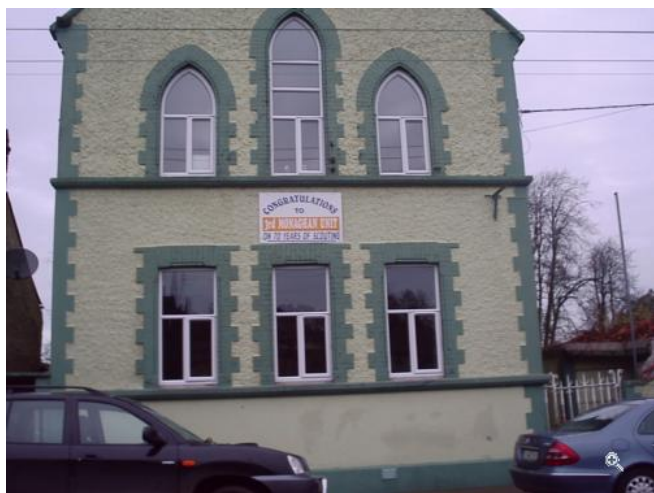
3rd Monaghan

This one field campsite in Dun Na Ri forest park is currently being developed by 3rd Monaghan scout group

The 3rd Monaghan venturer Scouts are from Carrickmacross and the surrounding areas. Carrickmacross is in Co. Monaghan, Rep of Ireland.

<http://www.carrickscouts.ie/content/view/16/32/>

The group is fortunate to have it's own scout den located centrally in the town. Known as Aras na Gumann, the building was originally used as a boys secondary school, (the Patrician high school), before becoming a multi-purpose venue used by scouts, various community groups and a local history museum.



In 1992, the building was leased by the group for exclusive use and now hosts group meetings and events. The building has also recently become a training centre for Scouting Ireland courses and attracts scouters from all over the north east for training and other scouting events.

Accommodation comprises a cub room, scout room, beaver room, venturer room, toilets, a kitchen and a meeting room. Stores and outdoor storage space is also attached.

Plans are at an advanced stage for the acquisition of a campsite for the group.

Piercestown Scout Centre

www.piercestowncamp.com

+353 (0)87 6191349 or (87) 6441013

Piercestown Campsite is one of the few serviced sites in Co Wexford for Scout and Guide Groups wishing to explore Co. Wexford and its areas of interest.

The whole locality is ideal for hiking, hill walking, water activities, pioneering, backwoods and much more. Our building commenced 15th February 2010 and is now completed and available for bookings for both hall and campsite.

The Site is situated in the village of Piercestown beside the Church and just a few minutes walk to a Londis Supermarket with Butchers, Fuel items as well as a very well stocked supermarket.

Indoor Accommodation

Toilets

Showers

Kitchen

Facilities for Indoor Activities close by:

Indoor activities in Wexford town can be arranged at local newly renovated Swimming Pool (4.5 miles) bowling club (2 miles) Omniplex Cinema (2 miles).

Travelling to Wexford is easy, Bus Eireann Coaches, Train to Wexford, Ferry from France (Irish Ferries from Le Havre) or Stena Line from Fishguard South Wales, and Irish Ferries from Pembroke, South Wales (Ferryport 15 Km away)

Supermarket – 3 mins walk from site, includes fully stocked Supermarket, Butcher, Gas, Fuel etc.

Facilities in the Hall:

Self catering Kitchen, heating and hot showers, spacious area (2 rooms) for sleeping and laundry room.

Piercestown Scout & Guide Campsite, Piercestown Village, Co. Wexford, Ireland is available €6.00 per person per night to include all electricity and water charges and Refuse/recycling bins.

A booking deposit of €50 per group is required when returning the Booking Form. All groups are required to pay camping fees in full prior to arrival date or on arrival at the site.

The hall may be hired for other events-activities. Price is on request. Email for detail.

Booking@piercestowncamp.com



Portlick (keine Webseite gefunden)

portlick.campsite@gmail.com

Contact Person: Mr John Butler

5 Montree,

Athlone,

Co. Westmeath

Contact No. +353-906-474515

+353-87-6885279

Centre Detail

Portlick Scout Campsite
Glasson,
Athlone,
Co Westmeath.

Site Details

Campsite consists of 5 acres of grassland on the eastern shores of Lough Ree. The campsite is situated 5km from the picturesque village of Glasson renowned to be the centre of Ireland and about 14km from the town Athlone.

Indoor space available (No beds but space for up to 20 to sleep indoors).

Shower and toilet facilities on site.

Tap water on site.

Firewood provided on site.

On Site Activities

- Bouldering Wall
- Archery
- Raft Building
- Canoeing (If instructors booked in advance)
- Orienteering Courses
- Permenant Zipline in use
- Pionneering Timber Available

Travel

Nearest Town - Glasson(4 Km)

Nearest Bus - Bus from Athlone available. Cost approx. 2euro per head.

Camp Fees

Brochure Available on request.

Contact Warden for more information.

Ruan

Ruan Scout Centre,

Noonan

Ruan

Co. Clare

Contact Person: Noel Keaney

noelkeaney@yahoo.co.uk

+353 (0) 86-3003009

+353(0) 61-369642

Any time after 5pm

Site Details

The campsite is a 14 acre site.

- A good sheltered camping site that offers a modern fully accessible toilet block and showers and a leaders kitchen.
- A Porta Cabin Building is also available for rent on site.
- Programme oppertunities will have to be organised by the people camping. Assistance can be organised if required.

Local facilities:

- Permission has been given by Coillte for use of the woods and this area provides an ideal place for programme activities.
- The site is situated 12 miles from Ennis and approximately 2 miles from the local shop, close to Dromore woods on the edge of the burren.
- It is ideal for hiking / cycling and general camping

<http://www.clarescouts.com/County%20Campsite.htm>

General Information

Ruan Scout Centre is owned and operated by Scouting Ireland - Clare Scout County and is approved by Scouting Ireland. The centre is surrounded by woodland and natural beauty and is located on the Mid-Clare Way, on the edge of the Burren. The centre is an ideal venue for camping, hill walking or to use as base camp while exploring the beauty of the Burren and the rugged West coast of Ireland.

The site is situated near Ruan village approximately 12Km from Ennis town, the market town for of County Clare. The campsite is 14 acres in size, three of which can be used for camping. The site is located beside woodland which is owned by Coillte and is ideal for bivvying, shelter building and challenges.

The site contains indoor accommodation for meetings, training or sleeping (beds / linen not provided) or inclement weather. Separate toilet and showers for leaders and children. A wet weather shelter / indoor dining area is also available on site.

The site also contains a Beaver Scout play area - rope bridge, climbing wall, obstacle course.



Rosses Point Scout Centre (nichts gefunden)

patsymcelhone@eircom.net

Camping and indoor facilities with toilets and showers available +353 (0) 71 9177375 or (0)87 2319399

Srahan

<http://www.srahanscoutcentre.com/>

Srahan Scout Centre

Srahan,
Camross,
Co. Laois.

Contact Person

Caroline Marks

carolinemarks1@@eircom.net

marksco@eircom.net

+353 (0)505 23269

Centre Details

Indoor Sleeping Accommodation for up to 50 people

- Main House: 2 rooms of 6 beds; 1 room of 8 plus fold up beds in Sitting Room
- White House: Downstairs: 12 Beds (including segregated leader area) & Upstairs Activity Area which doubles as on ground sleeping accommodation.
- Camping Space for upto 60
- Toilets & Showers (6 in all) in each building
- Oil fired central heating through-out
- Fully Equiped Kitchen (Gas Cookers)
- Split Sitting & Dining area with Open Fire in both areas
- Wet Weather & Activity Shelter (currently under development)
- TV available for use

Activities

- The site is located near to the Slieve Bloom Way and is suitable as a base for exploring the hills.
- Nearby is some 50 acres of forestry with endless programme options
- Space on site for Scout Skills and general sporting activities
- Pony Trekking & Fishing available in Camross
- Cinema, Bowling & Theatre in Portlaoise
- Birr Outdoor Pursuit Centre
- Explore Laois, Offaly and North Tipperary (Shannon Waterways activities, Heritage Towns in Roscrea & Birr, Visit Scout Log Cabin in nearby Kinnity)
- and much much more..... Ask for details

Camp Fees

On Request.

Facility Offers:

Indoor Sleeping Accommodation for upto 50 people

- Main House: 2 rooms of 6 beds; 1 room of 8
- White House: Downstairs: 12 Beds (including segregated leader area) & Upstairs Activity Area which doubles as on ground sleeping accommodation.
- *New seperate Leader sleeping area on both floors.*

Camping Space for upto 60

Toilets & Showers (6 in all) including wheelchair toilet and shower

Oil fired central heating through-out

Fully Equiped Kitchen (Gas Cookers)

Split Sitting & Dining area with Open Fire in both areas

Wet Weather & Activity Shelter (currently under development)

TV available for use.

New 30ft*30ft covered Camp Fire area.

New camping field beside Forest available in Summer 2012

Activities:

The site is located near to the Slieve Bloom Way and is suitable as a base for exploring the hills.

Nearby is some 50 acres of forestry with endless programme options
Space on site for Scout Skills and general sporting activities
Laois Tourism : <http://www.laois.ie/media/Media,1999,en.pdf>
Pony Trekking in local Kilvahan Stud Farm (see details below)
Fishing available in Camross- laois Angling Centre (see details below)
Paintballing at Supershot paintball in Stradbally
Cinema, Bowling & Theatre in Portlaoise
Birr Outdoor Pursuit Centre
Explore Laois, Offaly and North Tipperary (Shannon Waterways activities, Heritage Towns in Roscrea & Birr,
Visit Scout Log Cabin in nearby Kinnity)

Tralee Scout Den (nichts gefunden)

Tralee Scout Den,
Matt Talbot Road,
Tralee,
Co.Kerry.
Booking Contact:
Maura O'Donnell
+353 (0)66 7127744
or
+353 (0) 86 8733766
email: kerrycommish@eircom.net

Indoor Accommodation

Located in Tralee town centre, indoor accomodation only.
Bunks available for 15 persons, (others can be accommodated on mattresses on floor of hall). Toilets and
Showers. Fully fitted kitchen with utensils supplied.

Activities

Pioneering timber available for use

Amenities in Local Area

Adjacent to:
Supermarket
Train station
Canal
Kerry Way
Town Park

Woodstock Scout & Guide Centre (nichts gefunden)

Inistioge, Co.Kilkenny Enquiries & Bookings: woodstock@scouts.ie

This campsite, owned jointly by Scouting Ireland, The Irish Girl Guides and the Catholic Girl Guides, consists of a 10 acre camping field with sanitary facilities and water points.
Located in the picturesque Nore valley and surrounded by Coillte forestry there are plenty of opportunities for hiking and pioneering activities.